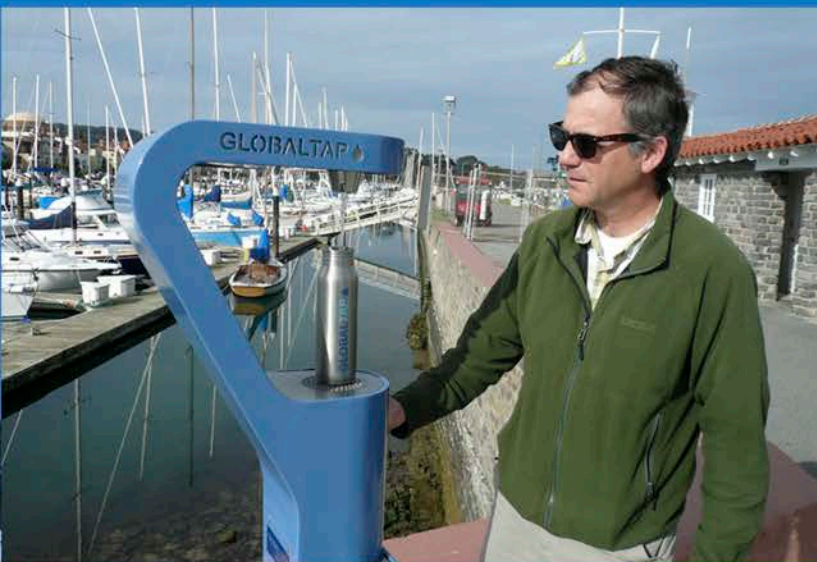


GLOBALTAP ™
water is a human right, not a privilege

GLOBALTAP

- ✓ Public access to clean, safe, free water
- ✓ Outdoor and indoor bottle filling stations
- ✓ Connection to a global movement
- ✓ An innovative means for sponsorship
- ✓ Easy to locate in crowded settings
- ✓ A place to meet, interact, and dialogue
- ✓ Reduces the plastic waste stream
- ✓ Drinking water helps combat obesity
- ✓ An integrated system of products
- ✓ Supports local water infrastructure
- ✓ Minimizes the carbon footprint
- ✓ A symbol for water that is easy to use



TAP Stations



GT1000 -
Bottle Filler



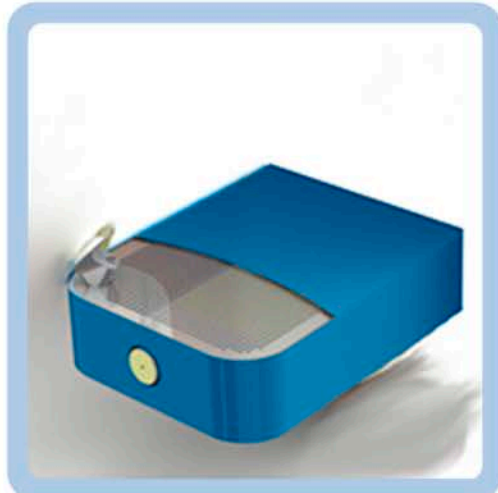
GT1100 - Bottle
Filler Fountain



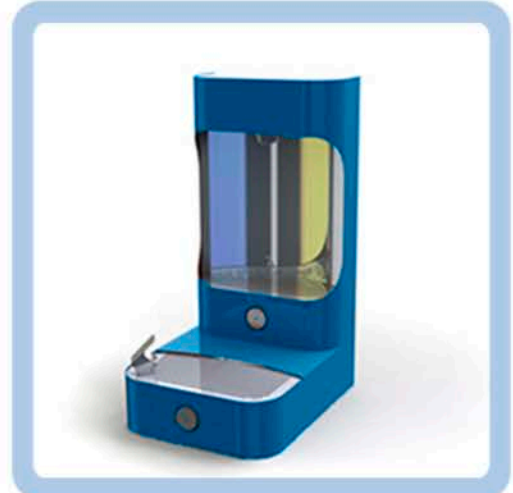
GT1200 - Fountain



GT1300 - Wall
Bottle Filler



GT1400 - Wall
Fountain



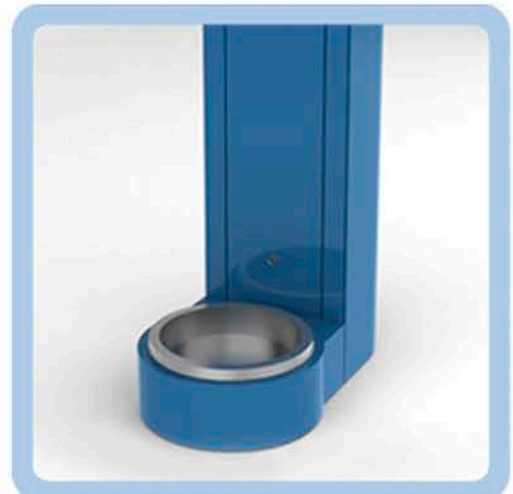
GT1450 - Wall Bottle
Filler Fountain



GT1500 - Wall Two
Bottle Filler



GTMU - Mobile Three
Bottle Filler



GTPET - Pet Bowl
Fountain

GLOBALTAP



GLOBALTAP Tap Stations are extremely durable, and made to withstand all outdoor, and indoor conditions. All units are constructed with heavy-duty steel, with stainless steel inner surfaces. The stainless steel spout and actuation button are made to withstand constant use, and abuse, and are vandal resistant. All outer surfaces are powder coated and sealed with weather resistant DuPont® paint, corrosion protection, and a graffiti proof clear coating. GLOBALTAP Tap Stations are ADA compliant, include a two-year manufacturer's warranty, and are made in the USA.

Contact Us

GLOBALTAP wants you to go with the flow by keeping you updated on our latest news and progress. If you have questions, want to place an order, or to find out more about GLOBALTAP please contact us at:

info@globaltap.org
<http://www.globaltap.org>
1 312 850-1110

